



07850987065

[whiteswanbeautycricklade@gmail.com](mailto:whiteswanbeautycricklade@gmail.com)



## Eye Treatments & Waxing

### Eye Treatments

|                        |        |
|------------------------|--------|
| •Eyebrow Wax           | £13.00 |
| Eyebrow Tint*          | £11.00 |
| Eyelash Tint*          | £20.00 |
| Eyelash Lift and Tint* | £35.00 |

### Body & Facial Waxing

|                  |        |
|------------------|--------|
| Upper Lip Wax    | £10.00 |
| Lip and Chin Wax | £15.00 |
| Underarm Wax     | £15.00 |
| Forearm Wax      | £15.00 |
| Half Leg Wax     | £19.00 |
| Full Leg Wax     | £25.00 |
| Hollywood Wax    | £29.00 |
| Brazilian Wax    | £29.00 |
| Back Wax         | £21.00 |
| Chest Wax        | £21.00 |
| Nose or Ear Wax  | £10.00 |

All \* treatments Requires a patch test.

### Cancellation Policy

We kindly ask for at least 24 hours' notice to cancel or reschedule your appointment. Late cancellations or missed appointments may incur a cancellation fee in line with our policy. Thank you for your understanding and support.



## Body Treatments

At White Swan Beauty, every massage is tailored just for you.

- Choose your preferred treatment duration, let us know whether you're after a deep tissue massage or a soothing relaxation experience, and we'll focus on the areas that need the most care.

|                           |               |
|---------------------------|---------------|
| <b>30 Minutes massage</b> | <b>£36.00</b> |
| <b>40 Minutes massage</b> | <b>£46.00</b> |
| <b>60 Minutes massage</b> | <b>£57.00</b> |
| <b>90 Minutes massage</b> | <b>£70.00</b> |

**Upgrade your massage to hot stones £7.00**

**Indian head massage £33.00**

Experience a deeply relaxing and rejuvenating experience with our Indian Head Massage. This treatment focuses on the upper back, shoulders, neck and scalp, relieving tension, reducing stress, improve circulation and eases headaches.

**Reflexology £38.00**

Discover the healing power of Reflexology—a deeply restorative therapy that targets specific pressure points on your feet, which correspond to different organs and systems within the body. Ideal for improving circulation, easing tension, and fostering overall wellbeing, reflexology offers a tranquil escape that nurtures both body and mind.





## Facial

**60 Minutes personalised facial      £57.00**

**30 Minutes express facial      £35.00**

Indulge yourself with our Eve Taylor facials—Eve Taylors products are expertly crafted using pure essential oils and botanically enriched formulas. our facial treatments are designed to rejuvenate, rebalance, and revitalise your complexion while soothing the mind and senses. Whether you're targeting specific skin concerns or simply seeking radiant, healthy skin, each facial is personalised to your unique needs.

## Reiki

**Angelic Reiki Healing      £55.00**

**Angel/Tarot card readings**

**30 minutes      £30.00**

**60 minutes      £68.00**

**Angel Healing**

**(card reading and Reiki)      £77.00**

Step into a serene space of energetic renewal with our Reiki healing sessions, Reiki is a gentle, hands-on therapy that channels universal life force energy to restore balance, ease emotional stress, and support the body's natural healing process.





# Nail Treatments

## Standard Nail Polish Treatments

|                 |        |
|-----------------|--------|
| File and Polish | £15.00 |
| • Manicure      | £23.00 |
| Pedicure        | £31.00 |
| Deluxe Pedicure | £36.00 |

## Gel Polish Treatments

|                              |        |
|------------------------------|--------|
| Gel Manicure                 | £30.00 |
| Gel pedicure                 | £30.00 |
| Gel Pedicure With Hard       |        |
| Skin Removal                 | £35.00 |
| Gel Polish Removal Only      | £17.00 |
| Gel Removal & Apply          | £35.00 |
| Full Coverage Nail Extension | £40.00 |

## Builder Gel Treatments

|                               |        |
|-------------------------------|--------|
| Builder Gel Manicure          | £35.00 |
| Builder Gel Infills           | £30.00 |
| Builder Gel Removal & Reapply | £40.00 |

## Men's Treatments

|                |        |
|----------------|--------|
| Men's Pedicure | £28.00 |
| Men's Manicure | £20.00 |

## Add on

|                      |       |
|----------------------|-------|
| French Polish Finish | £5.00 |
| Nail Designs         | £5.00 |



### **Opening times**

Monday 09:00 - 20:00

Tuesday 09:00 - 20:00

Wednesday \*10:30 - 17:00

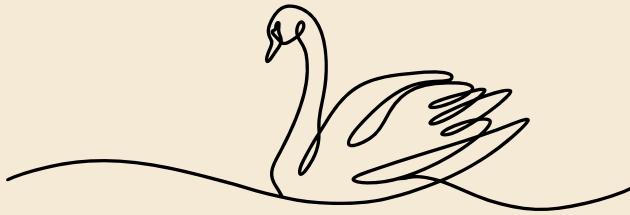
Thursday 09:00 -20:00

Friday 09:00 - 15:00

Saturday 09:00 - 15:00

Sunday \*10:00 - 16:00

\*alternate weeks



**The White Swan Beauty**

**Cricklade**

**31 High street**

**Cricklade**

**SN6 6AB**

**07850987065**

**[whiteswanbeautycricklade@gmail.com](mailto:whiteswanbeautycricklade@gmail.com)**